

ITEM #: _____ QTY: _____
 MODEL #: _____
 PROJECT NAME: _____

"PB" DIPPER WELL & FAUCET

DIPPER WELL FEATURES:

- 18GA 300 SERIES STAINLESS STEEL
- INCLUDES (1) BOWL - 5-1/2"W X 5-1/2"H, (1) BASKET - 5"W X 4-1/2"H
- INCLUDES BASKET DRAIN

DIPPER WELL FAUCET FEATURES:

- HIGH POLISHED TRIPLE DIPPED CHROME FINISH
- DECK MOUNT
- LEAD FREE COMPLIANT



PB-DWBA

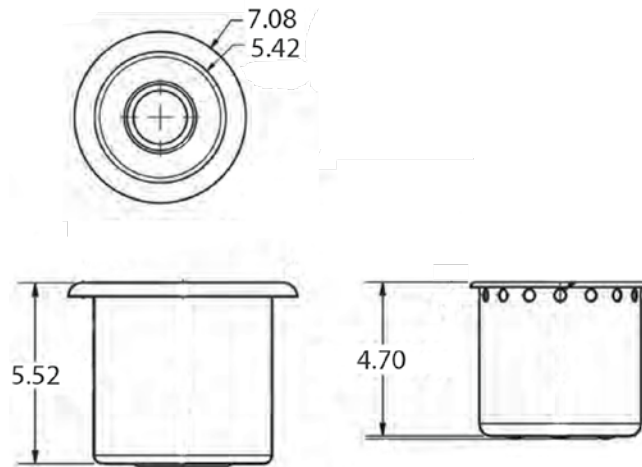


PBF-DWF-G

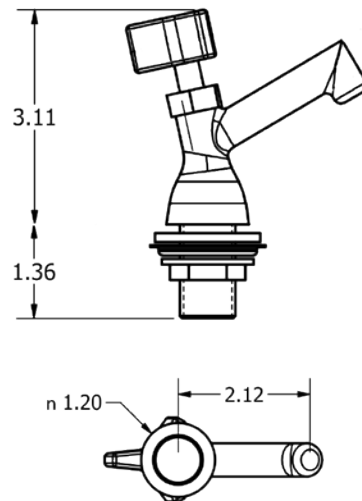
DIPPER WELL & FAUCET	
MODEL #	QTY
PB-DWBA	
PBF-DWF-G	

DETAILED SPECIFICATIONS

PB-DWBA



PBF-DWF-G



DIPPER WELL & FAUCET

MODEL #	WT. (LBS)
PB-DWBA	0.625
PBF-DWF-G	0.438

SOME UNITS SHIP UNASSEMBLED FOR REDUCED SHIPPING COST. ALL DIMENSIONS ARE TYPICAL. TOLERANCE +/- .500"
 John Boos & Co. is constantly engaged in a program of improving products and therefore reserves the right to change specifications without prior notice.



Boos
lock

AQ AutoQuotes

3601 S. Banker St. • Effingham, IL 62401 • PO BOX 609 • quotes@johnboos.com

www.johnboos.com

101218

57