



# STANDARD DROP-IN REFRIGERATED COLD PAN UNITS



Drop-in Cold pan units can be placed in existing countertops and other work areas to house items that need to be kept chilled. Perfect for cold bar items such as bottle drinks or salad bar items.



DIRCP-3 Shown

Item #: \_\_\_\_\_ Qty #: \_\_\_\_\_  
Model #: \_\_\_\_\_  
Project #: \_\_\_\_\_

## FEATURES:

High nominal cooling capacity for consistent product temperature control  
Aluminum encased copper tube evaporator panels improve heat transfer by increasing contact area  
This increases operating efficiency and reduces power consumption  
Expansion valve for efficient operation at various temperature conditions  
Refrigerant filter drier to insure cleanliness of sealed refrigeration circuit  
Sight glass to insure a properly charged refrigeration system  
Liquid receiver for improved refrigerant charge control  
Low running current suitable for any 115 volt circuit  
Precision electronic thermostat for exact temperature control  
Includes adapter bars for use with standard 12" x 20" pans

## MATERIAL:

**TOP:** 18 gauge, #304 stainless steel, with extruded black polyethylene thermal breaker marine edge

**INSULATION:** The pan is fully insulated and foamed in place with a 1-1/4" thickness on all sides and 2" thick on the bottom and enclosed with a 22 gauge galvanized steel outer jacket. This offers a lower heat gain into product

**LINER:** Constructed of 18 gauge, #304 stainless steel, with 3" recessed top, one piece construction, all welded, ground and polished to a uniform finish. All corners are coved with a 1/4" radius. Liner is pitched towards a 1" I.P.S. drain

**REFRIGERATION SYSTEM:** The compressor is housed in a 16 gauge galvanized under structure, fabricated from formed angles and bolted to the galvanized jacket. The fully self contained condensing unit is provided with a hermetically sealed compressor with a digital, programmable thermostat. The system is fully charged with environmentally friendly R404-A refrigerant

**ELECTRICAL:** Unit will be wired for 15 amps, 120V, single phase operation with an on/off thermostat switch.  
6 ft. cord with NEMA 5-15P.

1-3 Well Units: 115v, 8 Amps, 60 Hz, 1/5 HP

4-6 Well Units: 115v, 8 Amps, 60 Hz, 1/3 HP

## IMPORTANT NOTE:

The refrigeration compressor requires a free flowing supply of air for proper operation. For units installed in closed cabinets a minimum unobstructed air intake of 200 sq in and a separate exhaust of 200 sq in must be supplied by the installer or cabinet maker. Failure to provide adequate air intake and exhaust will void any warranty coverage on the unit.

Model #	Length (L)	Inside Length (B)	Cut-Out Size (Unit)	# of Wells	Refrigerant	Weight (lbs)	Cubic Feet
DIRCP-1	20.00"	18.32"	25-1/2" x 18-5/8"	1	R404-A	163 lbs.	14
DIRCP-2	33.50"	31.785"	25-1/2" x 32-1/8"	2	R404-A	205 lbs.	22
DIRCP-3	47.00"	45.29"	25-1/2" x 45-5/8"	3	R404-A	257 lbs.	30
DIRCP-4	60.50"	58.78"	25-1/2" x 59-1/8"	4	R404-A	325 lbs.	38
DIRCP-5	74.00"	72.28"	25-1/2" x 72-5/8"	5	R404-A	365 lbs.	46
DIRCP-6	87.50"	85.78"	25-1/2" x 86-1/8"	6	R404-A	398 lbs.	54

**NOTE:** Units are not designed to cool foods originally warm. Food should already be chilled to maintain the proper temperatures

SU-P-234 - 6' Cord with  
NEMA 5-15 plug Included



**WARNING:** Refrigerated Equipment on this page may expose you to chemicals, including Ethanes, that are known to the State of California to cause cancer or birth defects or other reproductive harm. For more Info., visit [www.p65warnings.ca.gov](http://www.p65warnings.ca.gov).



Customer Service Available To Assist You **1-800-645-3166** 8:30 am - 8:00 pm E.S.T.

For Orders:

Email: [customer@advancetabco.com](mailto:customer@advancetabco.com) or Fax To: 631-242-6900

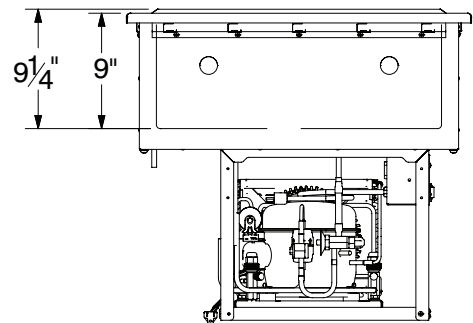
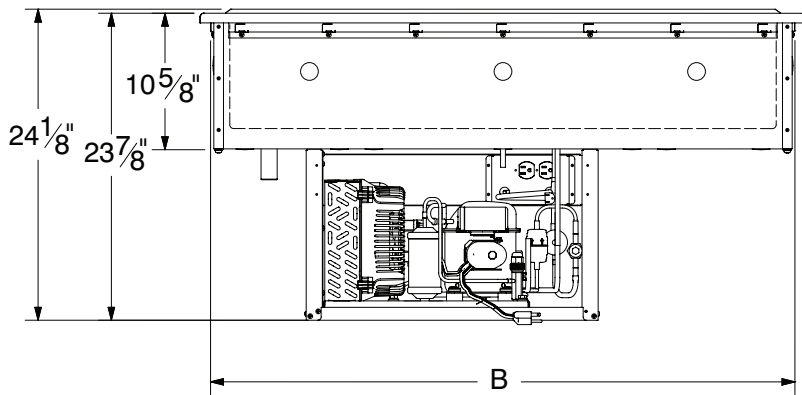
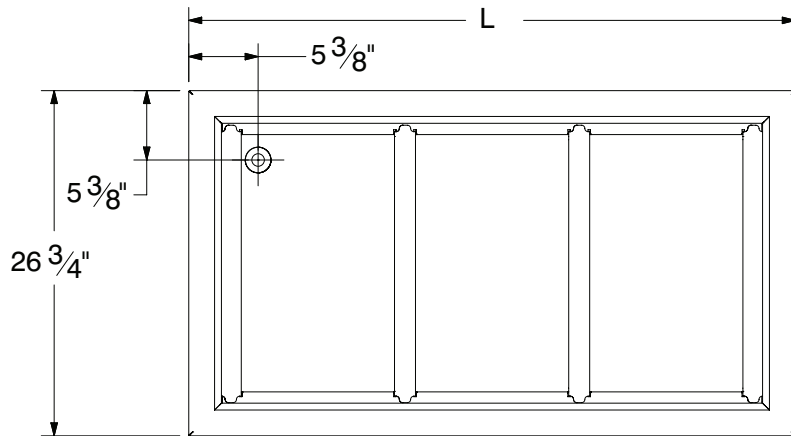
For Smart Fabrication™ Quotes:

Email: [smartfab@advancetabco.com](mailto:smartfab@advancetabco.com) or Fax To: 631-586-2933

# DIMENSIONS and SPECIFICATIONS

TOL  $\pm .125"$

ALL DIMENSIONS ARE TYPICAL



REF-V

200 Heartland Boulevard, Edgewood, NY 11717-8380

ADVANCE TABCO is constantly engaged in a program of improving our products. Therefore, we reserve the right to change specifications without prior notice.

© ADVANCE TABCO, SEPTEMBER 2018